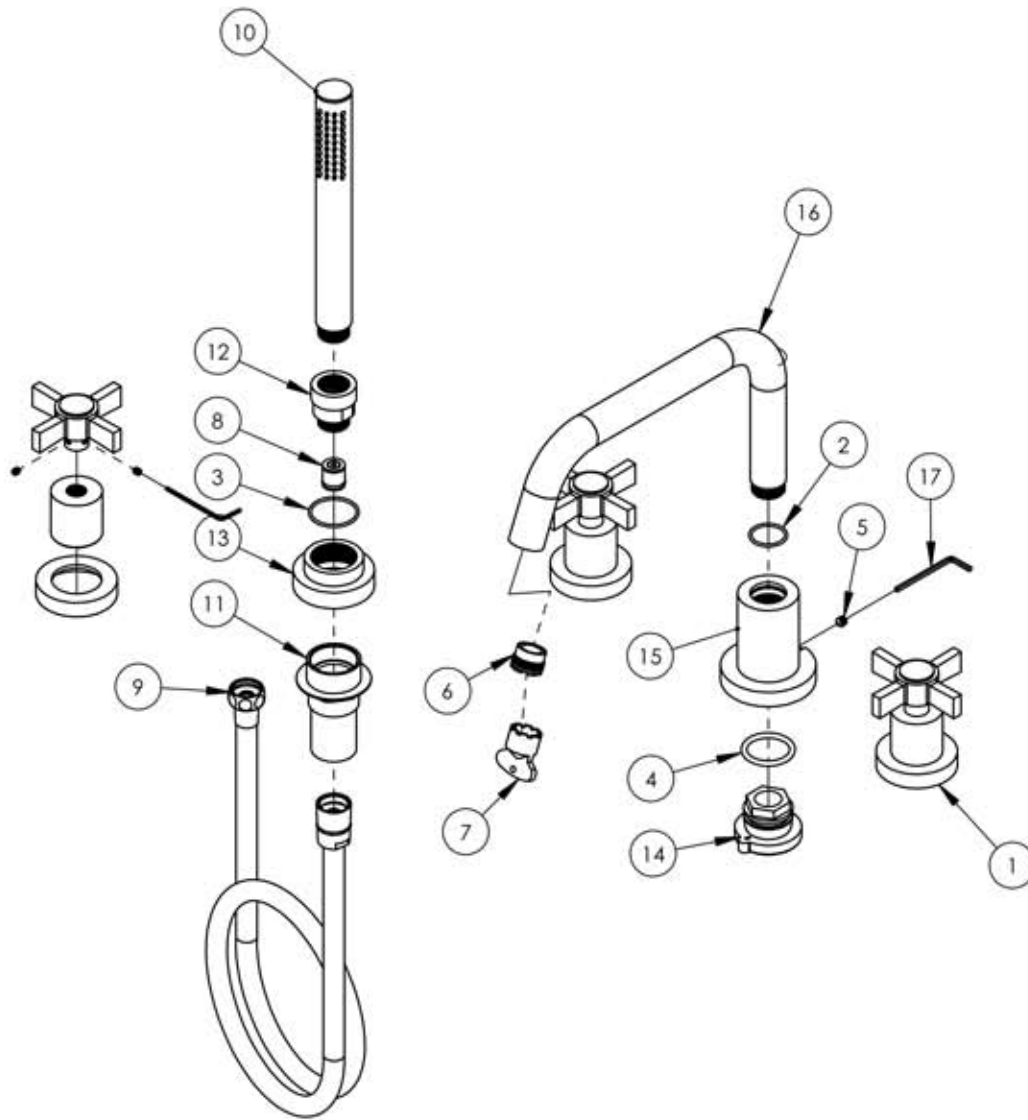


A

B

C

D



ITEM NO.	PART NUMBER	DESCRIPTION	QTY.
1	3-187/00	BLADE CROSS HANDLE FOR DECK TUB, BASIC SERIES	3
	11108/00	ESCUTCHEON LARGE ID FOR RT/PB, BASIC SERIES	1
	11107/00	HUB LARGE FOR RT, BASIC SERIES	1
	P01081/00	HANDLE CROSS BLADE BASIC	1
	92008	SET SCREW, CUP POINT 8-32UNC 3/16"L	2
	P39001	HEX KEY 5/64, FOR 8-32 SET SCREW	1
2	90020	O-RING, 7/8"ID X 1"OD X 1/16"THK, AS-568-020	1
3	90025	O-RING, 1-3/16"ID X 1/16"THK, AS-568-025	1
4	90216	O-RING, 1-1/8"ID X 1-3/8"OD X 1/8"THK., AS-568-216	1
5	92191	M6X1.0 -6MM L	1
6	P05024	AERATOR CACHE JUNIOR FULL FLOW BLUE	1
7	P05025	AERATOR, BASIC KEY, PLASTIC RED	1
8	P15006	FLOW REGULATION CHECK VALVE	1
9	P15008/00	HOSE, 1/2" BY 59" LENGTH	1
10	P15028	ROUND HANDSHOWER	1
	P15028_1	CYLINDER HAND HELD SHOWER BODY	1
	P15028_2	CYLINDER HAND HELD SHOWER CAP	1

E

ZONE	REV.	DESCRIPTION	DATE	APPROVED
C3	A	LARGE HUB, HANDLE	11-26-13	

REVISIONS

1261 LOGAN AVENUE  
COSTA MESA, CALIFORNIA 92626  
PHONE: 714.361.4800  
FAX: 714.617.3120

# PHYLIRICH®

Defining Luxury Since 1959

**PROPRIETARY AND CONFIDENTIAL**

THE INFORMATION CONTAINED IN THIS DRAWING IS THE SOLE PROPERTY OF RSS MANUFACTURING. ANY REPRODUCTION IN PART OR AS A WHOLE WITHOUT THE WRITTEN PERMISSION OF RSS MANUFACTURING IS PROHIBITED.

NEXT ASSY	USED ON	FRACTIONS ±1/64"	DECIMALS X.X: ±.1 X.XX: ±.01 X.XXX: ±.005	ANGULAR ±.5°
APPLICATION				
MATERIAL			NAME	DATE
FINISH		DRAWN	CA	10/3/2013
<b>DO NOT SCALE DRAWING</b>		CHECKED		

INTERPRET GEOMETRIC DIMENSIONING & TOLERANCING IN ACCORDANCE WITH ASME Y14.5-2009 & ASME Y14.41-2003 STANDARDS, UNLESS OTHERWISE SPECIFIED. DIMENSIONS ARE IN INCHES. TOLERANCES ARE:

ROMAN TUB WITH HAND SHOWER, BASIC SERIES, BLADE CROSS HANDLE

SIZE	ASM/PRT NO.	REV
<b>A</b>	D2139D1/00	A

SCALE: 1:5      WEIGHT: lbs.      SHEET 1 OF 2

5

4

3

2

1